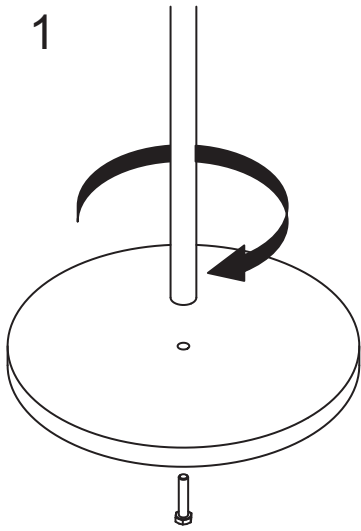
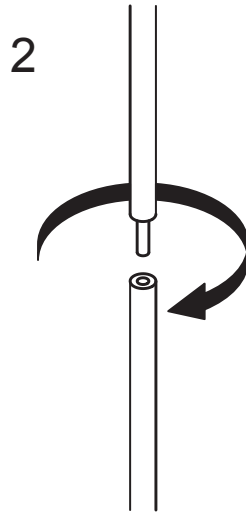


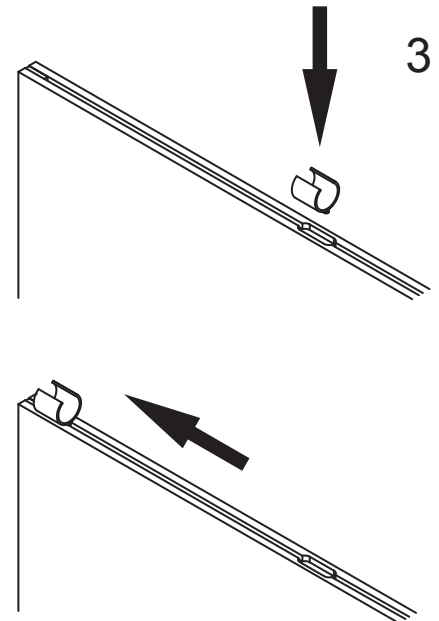
# Pole and Panel Display System Assembly Instructions



1. Using the bolts supplied, attach each foot to the bottom poles

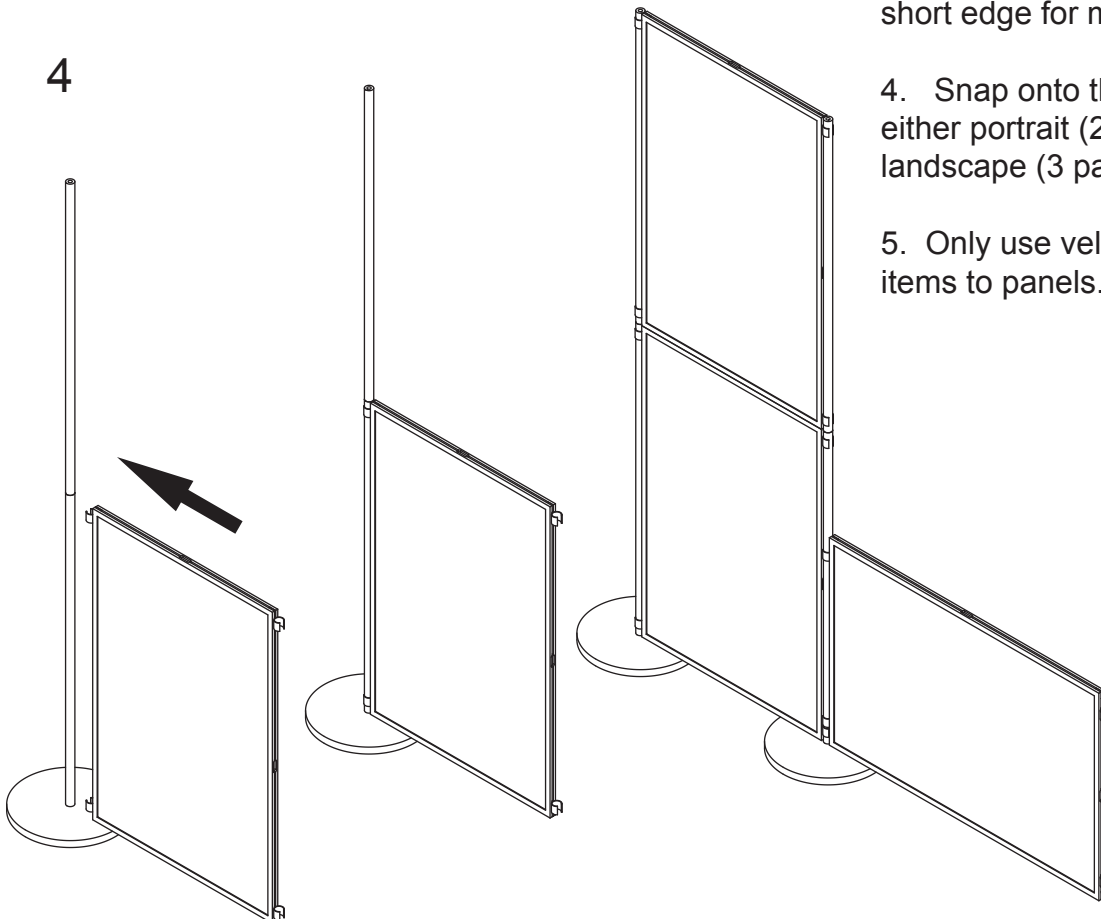


2. Screw the top poles into the base poles



3. Locate the joining clips by pressing into the cutout in the centre of the panel edge, then sliding towards the top corners of the panel. 2 clips should be placed on the long edge for mounting portrait, or the short edge for mounting landscape

4

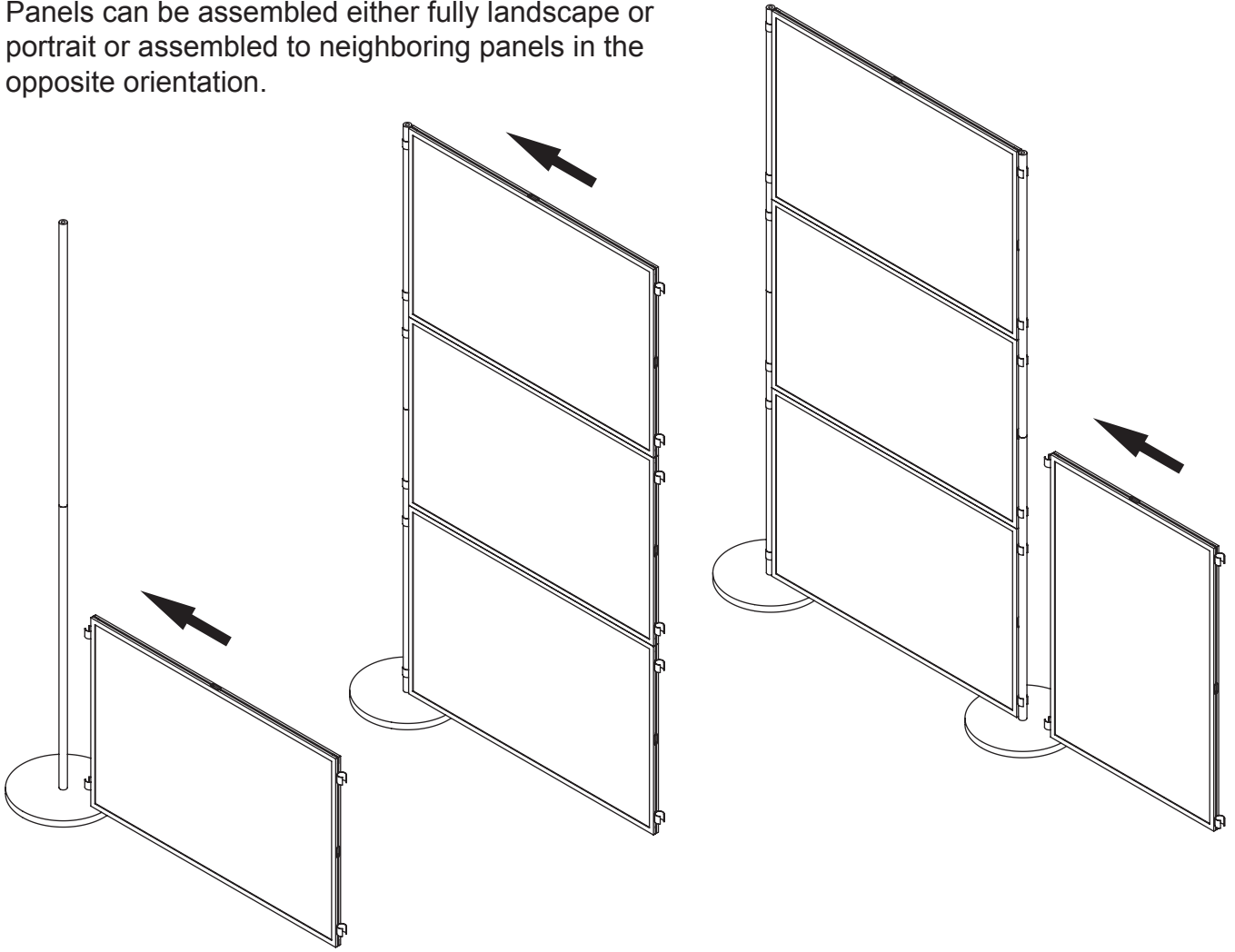


4. Snap onto the pole assembly in either portrait (2 panels) or landscape (3 panels) format

5. Only use velcro supplied to attach items to panels. *Do not* use pins

Continued overleaf

Panels can be assembled either fully landscape or portrait or assembled to neighboring panels in the opposite orientation.



Thank you for hiring this panel from Displays UK. We also do a wide range of other exhibition products which could help you promote your business. Please contact us to discuss how we could help.



[enquiries@displaysuk.co.uk](mailto:enquiries@displaysuk.co.uk) Tel: 01202 480104